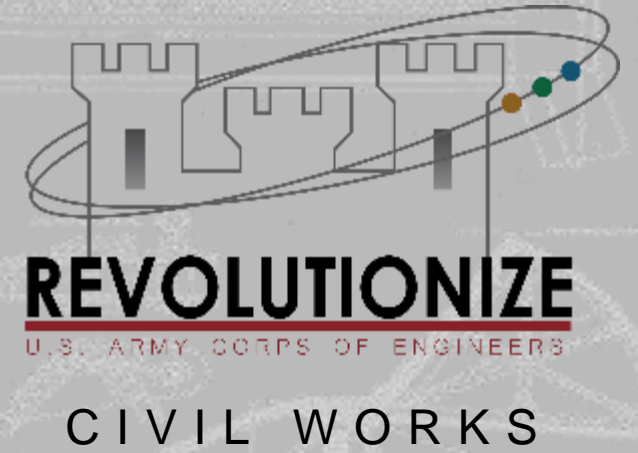


NATIONAL WATER SUPPLY ALLIANCE ANNUAL MEETING



Mr. Eric L. Bush
Acting Chief, Planning and Policy
October 28, 2021



US Army Corps
of Engineers®



CIVIL WORKS DIRECTORATE ORGANIZATION STRUCTURE



LTC Rachel Honderd
Executive Director
(202)761-0101



MG William Graham
Deputy Commanding General,
Civil & Emergency Operations
(202)761-0099



Mr. Alvin Lee
Director of Civil Works
(202)761-0100



Dr. Joe Manous, P.E.
Director
Institute for
Water Resources
(703) 428-7074



Ms. Meg Gaffney-Smith
Interim Chief
Operations & Regulatory
Division
(202)761-8560

Great Lakes & Ohio River
Division &
North Atlantic Division RIT

Navigation, Regulatory,
Natural Resources, Recreation,
Hydropower, and
Asset Management



Mr. Eric Bush
Interim Chief
Planning & Policy
Division
(202)761-0115

Mississippi Valley
Division & Southwestern
Division RIT

Planning Community of Practice,
Office of Water Project Review and
Policy Advisors



Mr. Stephen Hill
Chief
Office of Homeland Security
Director of Contingency Operations
(202)761-4714

Northwestern Division &
Pacific Ocean Division RIT

Flood Risk Management,
PL 84 -99, CIPR, NEPP and
Emergency Management



Mr. Pete Perez
Chief
Engineering &
Construction Division
(202)761-8826

South Atlantic Division &
South Pacific Division RIT

Civil Works Engineering, Dam & Levee
Safety, Military Missions,
Construction, and Value Engineering



Ms. Stacey Brown
Chief
Programs Integration Division
(202)761-4100

Program Development, National Programs,
Project Programs, Future Directions, and
Project & Program Management CoP

*RIT= Regional Integration Team
** CoP = Community of Practice



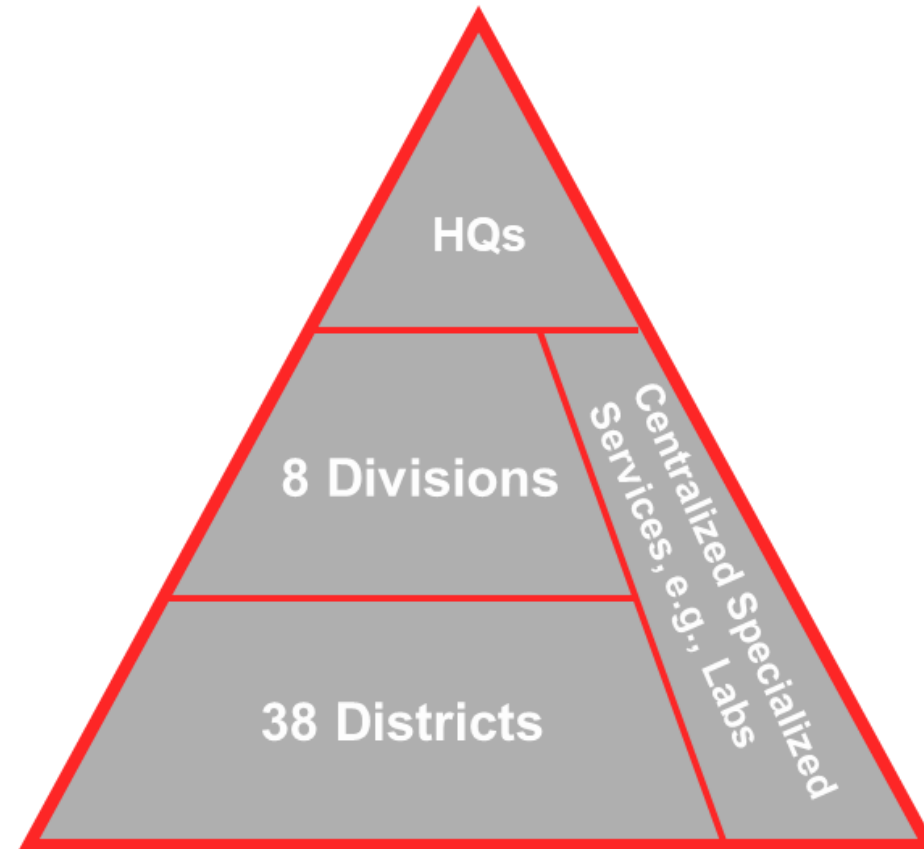
Click the Inside the Castle
Icon to open various
Episodes featuring
our leaders



CIVIL WORKS ORGANIZATION: GEOGRAPHIC (VERTICAL ALIGNMENT)



**Conforms to
Watershed
Boundaries
to Extent
Practicable**

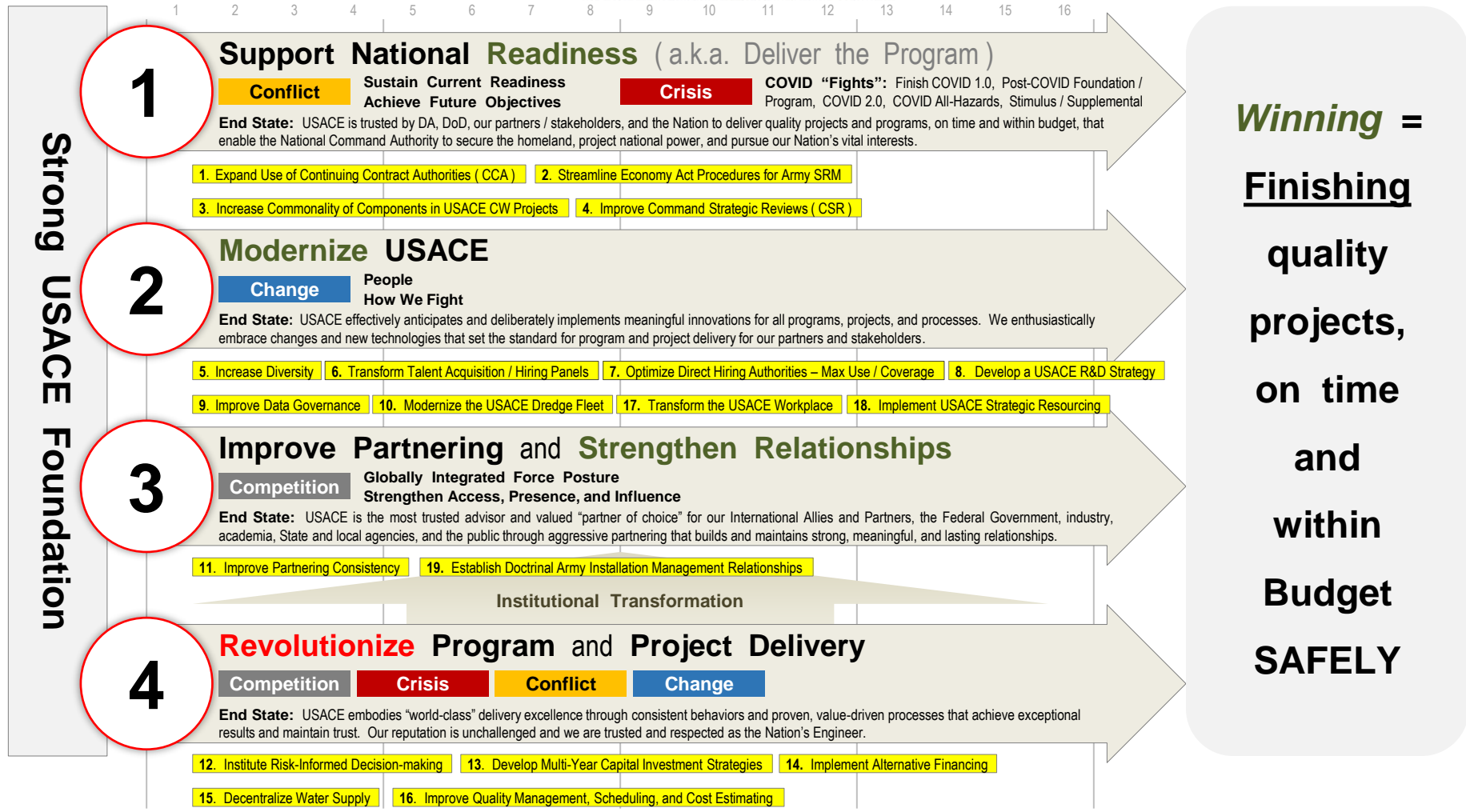
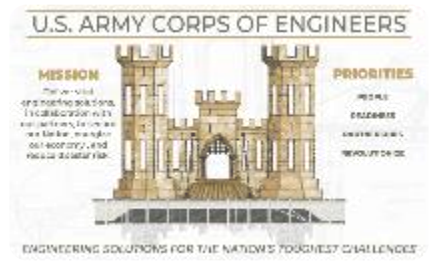


**Maximum
Delegation of
Authorities and
Responsibilities**

Note: District count does not include Europe, Far East, Japan, TAD Districts, which are all Military Programs focused.



USACE Mission, Vision, Priorities and Campaign Plan





Revolutionize Civil Works




Accelerate Project Delivery

- Focus:**
- Risk Informed Decision Making
 - Delegations
 - Accelerating small projects (CAP)



16 years
Project Time Saved



Leveraged
Partner Capabilities



Transform Project Financing and Budget

- Focus:**
- Corps Water Infrastructure Financing Program
 - Public Private Partnerships



13 years
Accelerated Delivery by

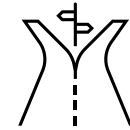


\$175 Million
Federal Costs Reduced by



Improve Permitting and Regulation Reform

- Focus:**
- Improved partner/public outreach
 - Regulatory Guidance Letters
 - Modification/reissuance of Nationwide Permits



Improved
Decision-Making



Reduced
Bureaucracy



Proactive Strategic Engagement

- Focus:**
- Proactive engagement and communication activities/tools
 - Enhanced internal Communication/Coordination



Enhanced
Internal/External
Communication



Connected
to over 800+ partners
through PROACTIVE
Engagement Activities





WATER RESOURCES DEVELOPMENT ACT OF 2020



Implementation Guidance Status

36 sections
Need Implementation Guidance

11 sections
Signed to Date

Remaining
25 sections
Expected to be Released in the **Coming Weeks**

39 Reports to Congress

10 Reports to Congress
Submitted to ASA(CW) Review

Section 205: Selma, AL
Report to Congress Submitted

December 27, 2020
WRDA 2020 enacted as part of the Consolidated Appropriations Act and included:

- **Harbor Maintenance Trust Fund**
\$2B additional funds for harbor maintenance
- **Inland Waterways Trust Fund**
Reduced contribution from 50% to 35%
- **46 construction projects**
Cost of \$15B
- **27 Feasibility Studies**



ADMINISTRATION, ARMY, USACE INITIATIVES



- **Administration Initiatives**

- Climate Change - Update to Climate Action Plan
- Environmental Justice & Equity/Justice40



- **Rulemaking Efforts**

- Waters of the U.S. – EPA/Army Led
- PR&G – CEQ Led - Interagency
- 408 Program – USACE Led
- Nationwide Permits – USACE Led
- National Disaster Procedures – USACE Led
- Ability to Pay for Flood Control – USACE Led
- CWIFP – USACE Led



- **Policy Elevation on the West Coast Region Guidance – Endangered Species Act**

- Environmental Baseline/Evaluation of Effects for ESA Consultation
 - Regulatory Program and CW Water Resource Projects



WATER SUPPLY – RECENT HISTORY



- Draft Water Supply Rulemaking *December 2016*
 - Clarify ambiguous statutory authorities
 - Reexamine current policies
 - Improve administrative processes
- Implementation guidance for section 1121 of Water Resources Development Act (WRDA) of 2018 May 2018 provided *May 2019*
 - Directed USACE to expedite the review of applications for a covered easement in the Upper Missouri River Mainstem
 - Directed MSCs to improve internal processes for reviewing requests for water withdrawals and access to federal project lands for placement of water withdrawal intakes.
- Draft Water Supply Rule withdrawn *March 2020*
- ***USACE went back and looked for opportunities to improve current policies without the need for rulemaking.***



WATER SUPPLY - ACTIONS TO DATE



- Delegated approval of reports and agreements from the ASA(CW) to USACE in certain circumstances. *April 2020*
- USACE delegated approval of certain reports and agreements to the Division Commanders. *May 2020*
- Clarified that requests for amortization payments of Repair, Reconstruction and Rehabilitation would be considered. Approval authority is at the ASA(CW) office. *June 2020*
- Rescinded Real Estate PGL #26 *December 2020*
 - Streamlined process for surplus water contracts.
 - Encouraged the field to make risk-informed decisions with delegated authority.



ACTIONS TO DATE, CONT.



- Approved Section 6 agreement templates
 - the costs charged are those actually incurred by the Government except for the Upper Missouri River reservoirs where no charges are assessed pursuant to WRRDA 2014, as amended.
- Developed preliminary direction to assist teams in formulation of alternatives for reallocation reports to provide:
 - More deference to State water laws and priorities
 - Return flow crediting assessment
 - Validation of water supply needs and
 - Standard language for water storage agreements





LET'S SUSTAIN THE CONVERSATION



- **Revolutionize USACE CW website for information:** <https://www.usace.army.mil/Missions/Civil-Works/Infrastructure/revolutionize/>
- **USACE CW P3 public website:** https://www.usace.army.mil/Missions/Civil-Works/Infrastructure/Infra_P3_program/
- **USACE CWIFP website:** <https://www.usace.army.mil/Missions/Civil-Works/Infrastructure/revolutionize/CWIFP/>
- **USACE publications** can be found at the official repository for USACE Engineering Regulations (ERs), Engineering Circulars (ECs), Engineering Manuals (EMs) and other official public documents including glossaries, policies, and memos originating from Headquarters USACE: <https://www.publications.usace.army.mil/>
- **Ask a librarian:** Having trouble finding what you are looking for? Not sure what you need or where to look? Ask a Librarian. We have the experts available to help you: library@usace.army.mil
- **Inside the Castle Podcast:** Go behind castle doors to hear how the Corps is solving some of the nation's toughest engineering challenges: <https://podcasts.apple.com/us/podcast/inside-the-castle/id1539014668>
- **Send contact info, direct input, feedback, or meeting requests to:** CW.Infrastructure.Team@usace.army.mil



TOGETHER WE ARE STRONGER

partnerships in action



Q & A

